



## Polaris RZR RS1 2.5 IBP Rear Coilover

King Shocks 12472 Edison Way Garden Grove, CA 92841  
714-530-8701 [www.kingshocks.com](http://www.kingshocks.com)

### Rear Parts List:

2 – 2.5 IBP Rear Coilovers (25700-326)  
4 – 3.0 Hose Clamps (62040)

### Tools Required:

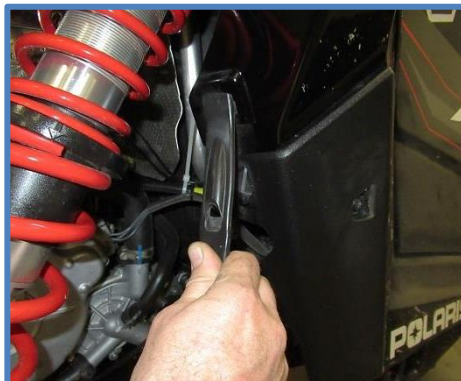
Floor Jack/Jack Stand  
Metric Wrench/Socket Set



INTERNAL BYPASS  
**IBP**

**REAR:** With the vehicle on level ground, block the front tires. Using a floor jack, raise the rear end and support the frame rails with jack stands for safety. **NOTE: Never work under an unsupported vehicle.**

1. In order to access the upper mounting hardware you must first remove the side panels. Turn the knobs 90 degrees to unlock the panel and then release the bungee straps. Pull panel back and out to remove.



**IMPORTANT:** Read all instructions thoroughly from start to finish before beginning the install. Check parts list and make sure all parts are included in the kit. If the instructions are not properly followed severe frame, driveline and/or suspension damage may result. Check for frame and suspension damage prior to installation.

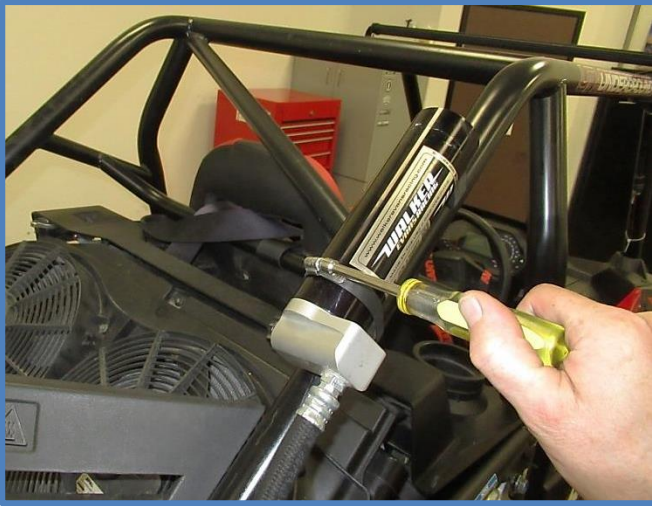
This kit does not require welding. Do not weld on any component. Welding may void the warranty and/or cause the product to fail. If any parts are missing, or for tech assistance; Contact King Off Road Racing Shocks: 714-530-8701 Most important after the install, Feel the difference and have fun.



## Polaris RZR RS1 2.5 IBP Rear Coilover

King Shocks 12472 Edison Way Garden Grove, CA 92841  
714-530-8701 [www.kingshocks.com](http://www.kingshocks.com)

2. Remove the reservoir from the mount on roll cage.



3. Remove the lower mounting bolt using an 18mm wrench and socket.



4. Remove the upper bolt using an 18mm wrench and socket and remove shock from vehicle.



**IMPORTANT:** Read all instructions thoroughly from start to finish before beginning the install. Check parts list and make sure all parts are included in the kit. If the instructions are not properly followed severe frame, driveline and/or suspension damage may result. Check for frame and suspension damage prior to installation.

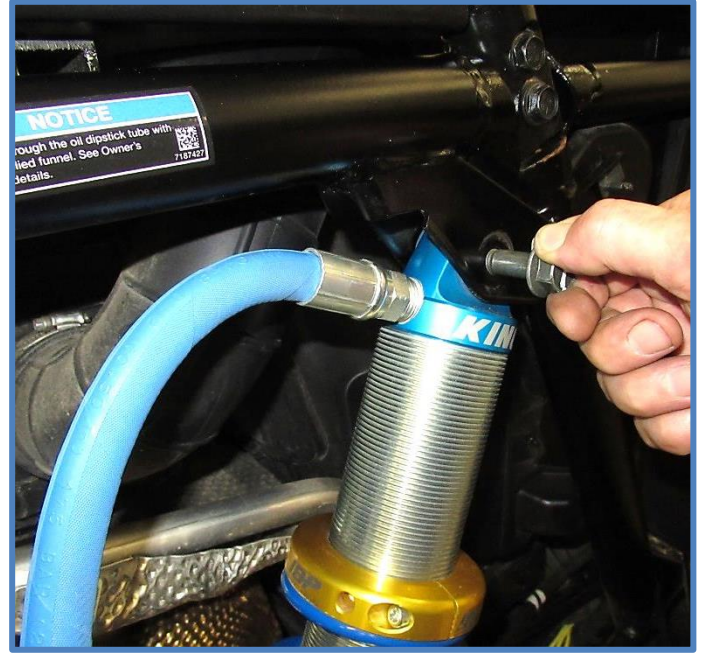
This kit does not require welding. Do not weld on any component. Welding may void the warranty and/or cause the product to fail. If any parts are missing, or for tech assistance; Contact King Off Road Racing Shocks: 714-530-8701 Most important after the install, Feel the difference and have fun.



## Polaris RZR RS1 2.5 IBP Rear Coilover

King Shocks 12472 Edison Way Garden Grove, CA 92841  
714-530-8701 [www.kingshocks.com](http://www.kingshocks.com)

5. Install King Shocks using the factory hardware. Place the shock in position on the vehicle and install the upper mounting hardware and tighten to factory specs.



**IMPORTANT:** Read all instructions thoroughly from start to finish before beginning the install. Check parts list and make sure all parts are included in the kit. If the instructions are not properly followed severe frame, driveline and/or suspension damage may result. Check for frame and suspension damage prior to installation.

This kit does not require welding. Do not weld on any component. Welding may void the warranty and/or cause the product to fail. If any parts are missing, or for tech assistance; Contact King Off Road Racing Shocks: 714-530-8701 Most important after the install, Feel the difference and have fun.



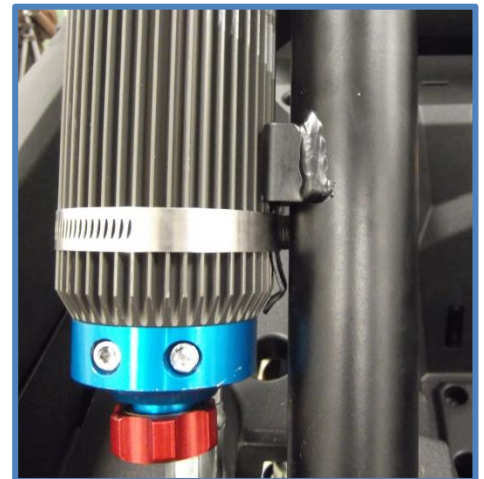
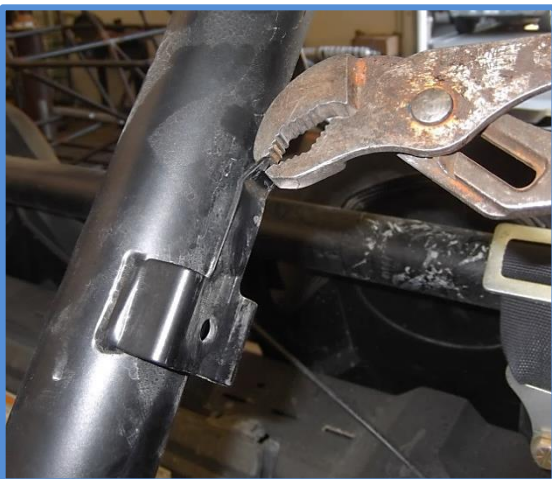
## Polaris RZR RS1 2.5 IBP Rear Coilover

King Shocks 12472 Edison Way Garden Grove, CA 92841  
714-530-8701 [www.kingshocks.com](http://www.kingshocks.com)

6. Install the lower bolt and tighten to factory specs.



7. Install reservoir using the provided hose clamps and mount to existing roll cage bracket. You may need to straighten out the tabs on reservoir mount as shown.



**IMPORTANT:** Read all instructions thoroughly from start to finish before beginning the install. Check parts list and make sure all parts are included in the kit. If the instructions are not properly followed severe frame, driveline and/or suspension damage may result. Check for frame and suspension damage prior to installation.

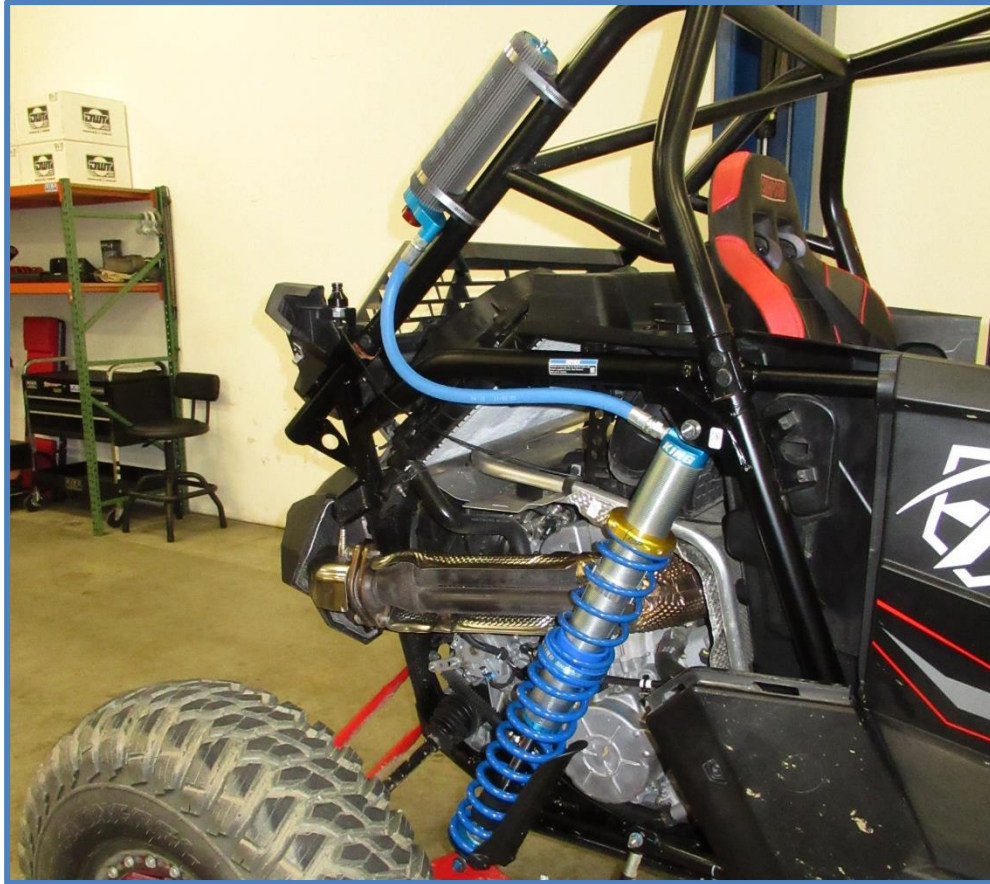
This kit does not require welding. Do not weld on any component. Welding may void the warranty and/or cause the product to fail. If any parts are missing, or for tech assistance; Contact King Off Road Racing Shocks: 714-530-8701 Most important after the install, Feel the difference and have fun.



## Polaris RZR RS1 2.5 IBP Rear Coilover

King Shocks 12472 Edison Way Garden Grove, CA 92841  
714-530-8701 [www.kingshocks.com](http://www.kingshocks.com)

Installed shock should look similar to the photo below...

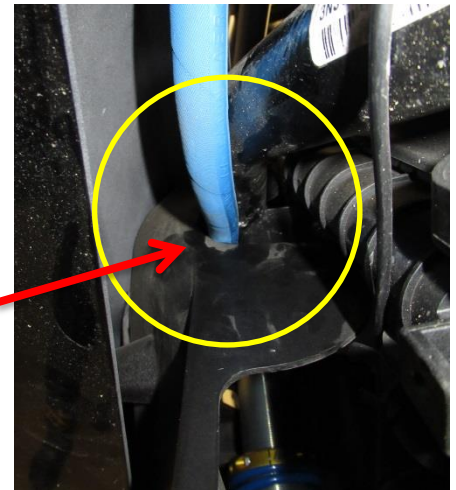


Depending on how you route the hose and where you mount the reservoir you may need to trim the side panels for hose clearance before finishing the install.

**Install a side panel and check for hose clearance issues, trim if necessary as shown on the following page.**



**Check for hose clearance**



**IMPORTANT:** Read all instructions thoroughly from start to finish before beginning the install. Check parts list and make sure all parts are included in the kit. If the instructions are not properly followed severe frame, driveline and/or suspension damage may result. Check for frame and suspension damage prior to installation.

This kit does not require welding. Do not weld on any component. Welding may void the warranty and/or cause the product to fail. If any parts are missing, or for tech assistance; Contact King Off Road Racing Shocks: 714-530-8701 Most important after the install, Feel the difference and have fun.



## Polaris RZR RS1 2.5 IBP Rear Coilover

King Shocks 12472 Edison Way Garden Grove, CA 92841  
714-530-8701 [www.kingshocks.com](http://www.kingshocks.com)

8. Mark the area where hose makes contact with body panel and cut or grind enough material to provide adequate room for hose to move around without rubbing on the edge of the body panel.



Install side panels once trimming is complete...



**IMPORTANT:** Read all instructions thoroughly from start to finish before beginning the install. Check parts list and make sure all parts are included in the kit. If the instructions are not properly followed severe frame, driveline and/or suspension damage may result. Check for frame and suspension damage prior to installation.

This kit does not require welding. Do not weld on any component. Welding may void the warranty and/or cause the product to fail. If any parts are missing, or for tech assistance; Contact King Off Road Racing Shocks: 714-530-8701 Most important after the install, Feel the difference and have fun.



Polaris RZR RS1 2.5 IBP Rear Coilover

King Shocks 12472 Edison Way Garden Grove, CA 92841  
714-530-8701 [www.kingshocks.com](http://www.kingshocks.com)



**Double check your install, make sure the shocks are mounted properly and all hardware is tight. Recheck the hardware after 50 miles and periodically after that as part of routine maintenance.**

King Shocks  
12472 Edison Way  
Garden Grove, CA 92841  
[www.kingshocks.com](http://www.kingshocks.com)



**IMPORTANT:** Read all instructions thoroughly from start to finish before beginning the install. Check parts list and make sure all parts are included in the kit. If the instructions are not properly followed severe frame, driveline and/or suspension damage may result. Check for frame and suspension damage prior to installation.

This kit does not require welding. Do not weld on any component. Welding may void the warranty and/or cause the product to fail. If any parts are missing, or for tech assistance; Contact King Off Road Racing Shocks: 714-530-8701 Most important after the install, Feel the difference and have fun.