



2019+ Mercedes Sprinter 3500 2WD/4WD 2.5 Rear Shocks

King Shocks 12472 Edison Way Garden Grove, CA 92841
714-530-8701 www.kingshocks.com

Rear Parts List:

- 2 – 2.5 Piggyback Shocks (25001-332A-2wd or 25001-343A-4wd)
- 2 – Brake Line Brackets (25071-006L/007R)
- 1 – Hardware Kit (KH02-211)

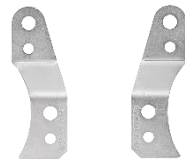
Tools Required:

- Floor Jack/Jack Stands
- Metric Wrench/Socket Set
- Standard Wrench/Socket Set

Mercedes Sprinter 3500 OEM PERFORMANCE SERIES



2wd – 25001-332A



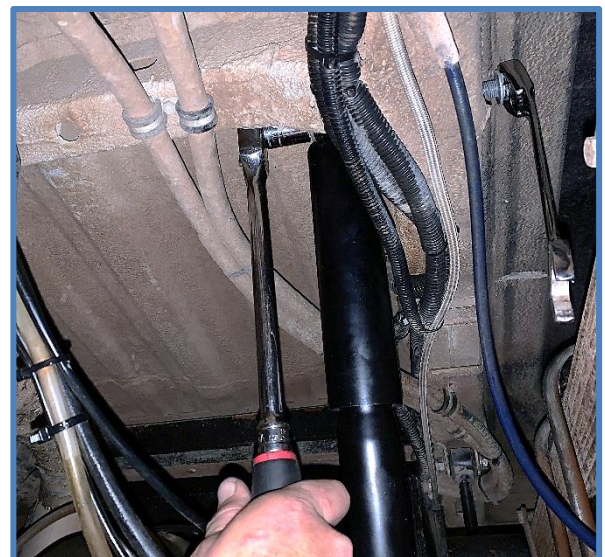
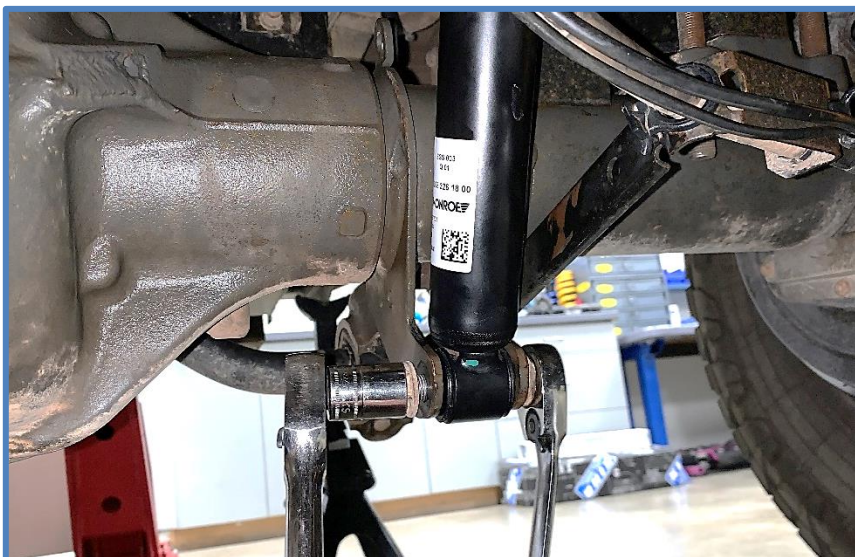
Brake Line Brackets



4wd – 25001-343A

REAR: With the vehicle on level ground, block the front tires. Using a floor jack, raise the rear end and support the frame rails with jack stands for safety. **NOTE: Never work under an unsupported vehicle.**

1. Remove the nut and bolt from the lower mount then remove the nut and bolt from the upper mount and remove shocks from vehicle.



IMPORTANT: Read all instructions thoroughly from start to finish before beginning the install. Check parts list and make sure all parts are included in the kit. If the instructions are not properly followed severe frame, driveline and/or suspension damage may result. Check for frame and suspension damage prior to installation.

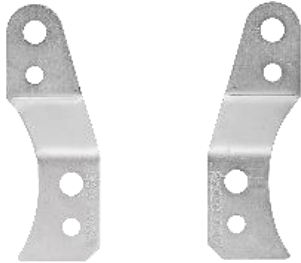
This kit does not require welding. Do not weld on any component. Welding may void the warranty and/or cause the product to fail. If any parts are missing, or for tech assistance; Contact King Off Road Racing Shocks: 714-530-8701 Most important after the install, Feel the difference and have fun.



2019+ Mercedes Sprinter 3500 2WD/4WD 2.5 Rear Shocks

King Shocks 12472 Edison Way Garden Grove, CA 92841
714-530-8701 www.kingshocks.com

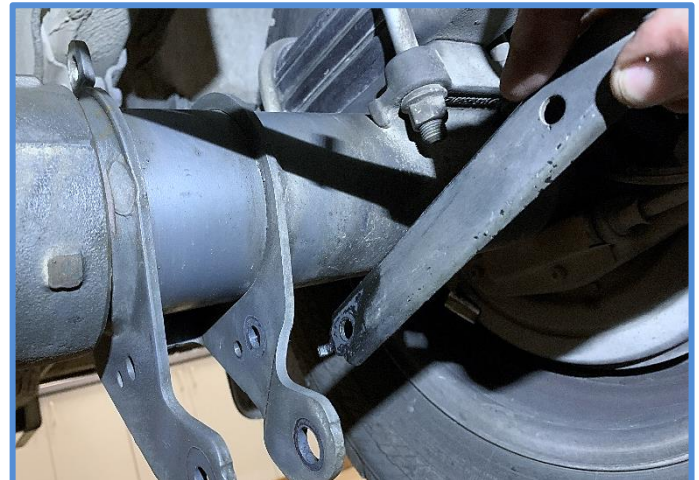
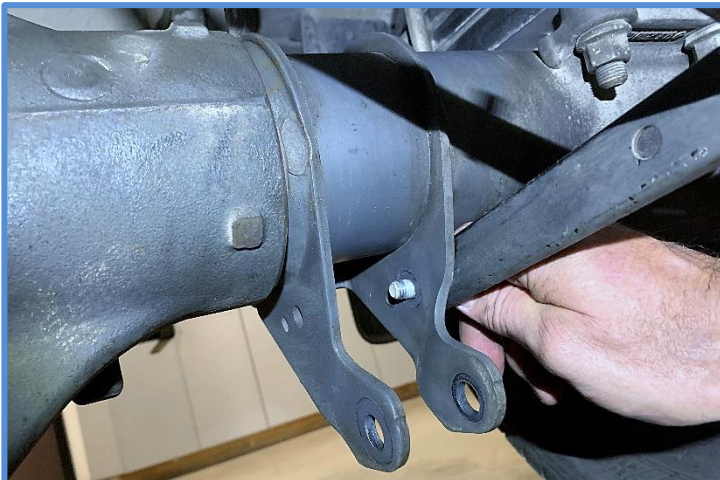
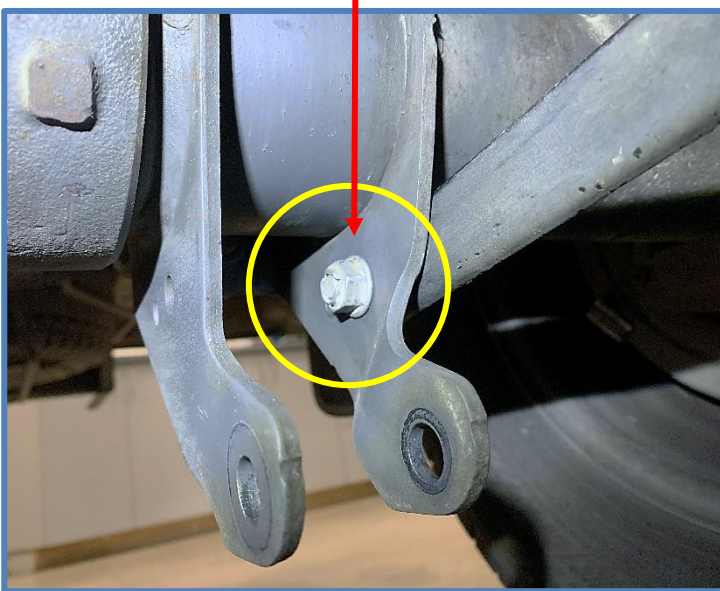
2. Brake line brackets must be installed to make room for the new shocks. Install brake line brackets using the provided hardware. Be aware the brackets are side specific and must be installed as shown in the following steps...



Brake Line Brackets



3. First, remove the factory bolt from the factory brake line brackets.



IMPORTANT: Read all instructions thoroughly from start to finish before beginning the install. Check parts list and make sure all parts are included in the kit. If the instructions are not properly followed severe frame, driveline and/or suspension damage may result. Check for frame and suspension damage prior to installation.

This kit does not require welding. Do not weld on any component. Welding may void the warranty and/or cause the product to fail. If any parts are missing, or for tech assistance; Contact King Off Road Racing Shocks: 714-530-8701 Most important after the install, Feel the difference and have fun.



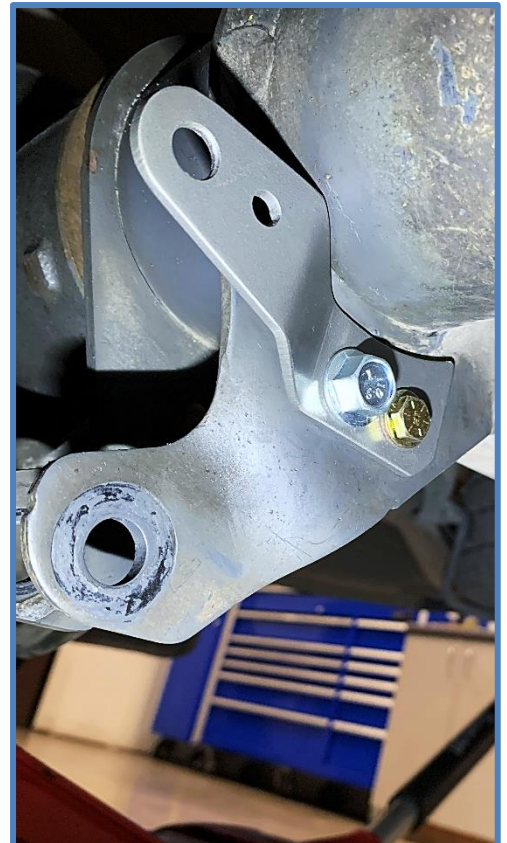
2019+ Mercedes Sprinter 3500 2WD/4WD 2.5 Rear Shocks

King Shocks 12472 Edison Way Garden Grove, CA 92841
714-530-8701 www.kingshocks.com

4. Place brake line bracket on side of shock mount in same location as factory brake line bracket you just removed and line up with existing holes. (Photos show left side)



5. Use the provided 10mm hardware and the 1/4" hardware to attach the bracket. Install hardware as shown and tighten to secure bracket to shock mount. (Photos show left side)



IMPORTANT: Read all instructions thoroughly from start to finish before beginning the install. Check parts list and make sure all parts are included in the kit. If the instructions are not properly followed severe frame, driveline and/or suspension damage may result. Check for frame and suspension damage prior to installation.

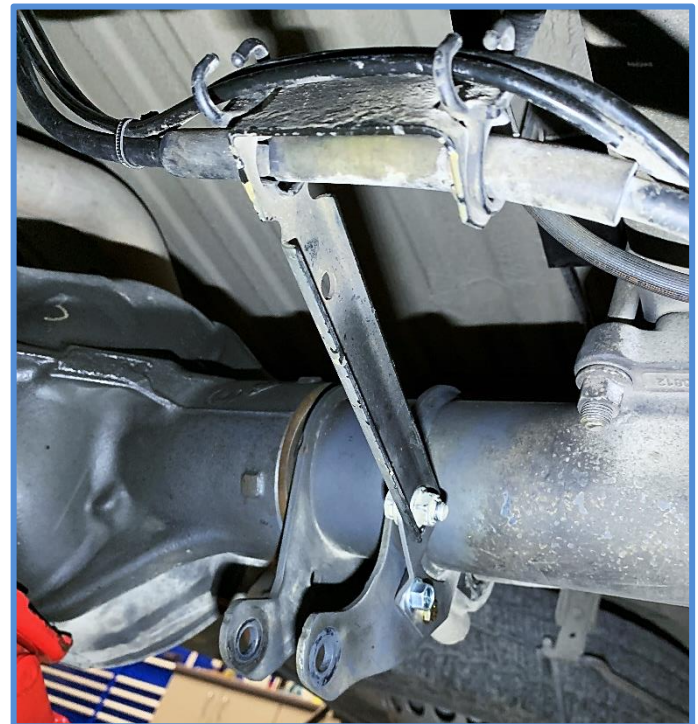
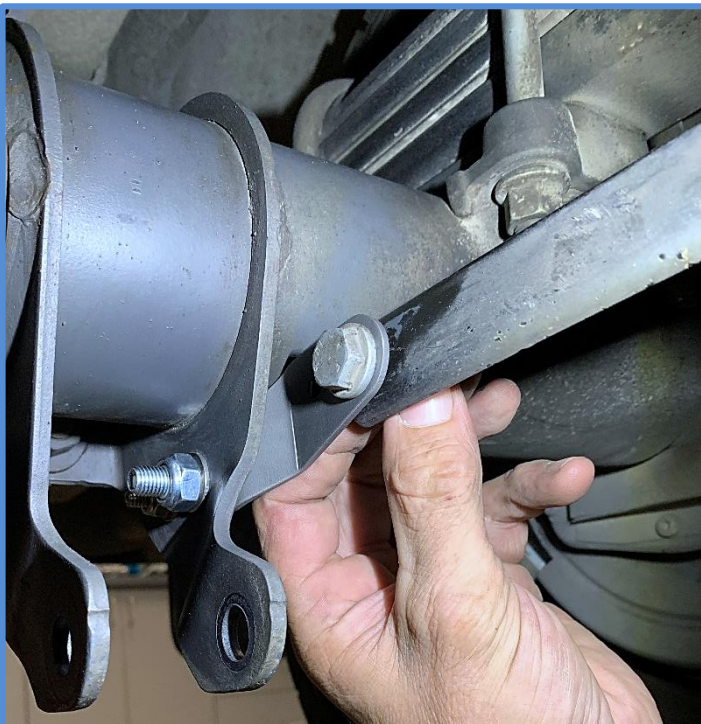
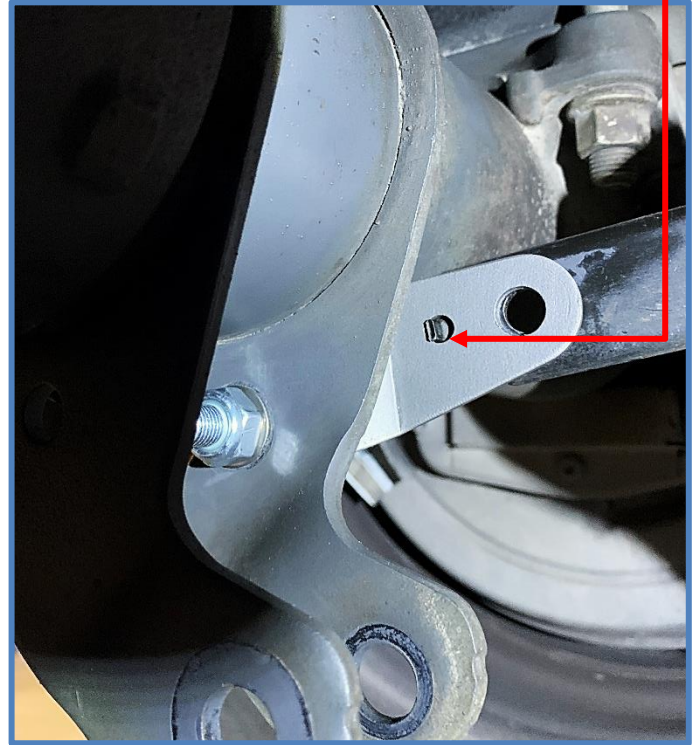
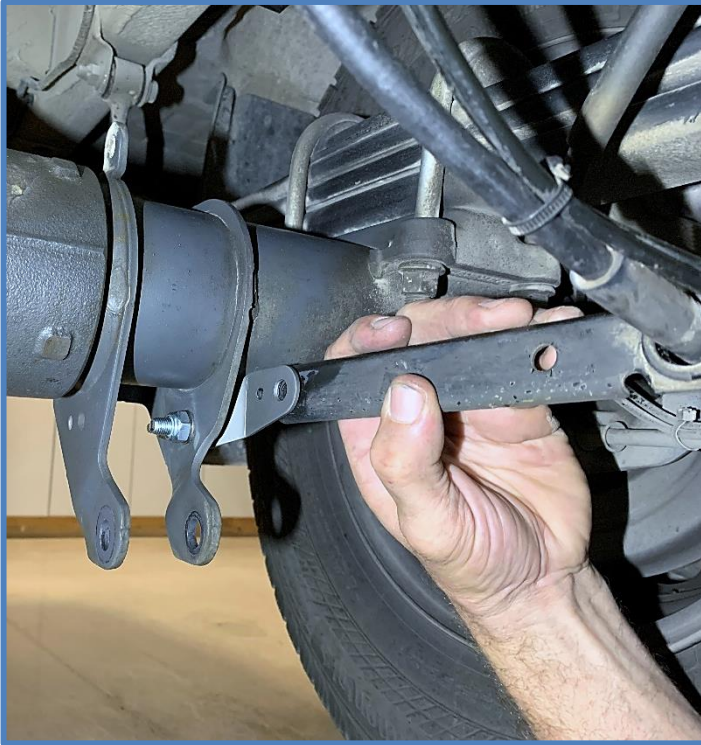
This kit does not require welding. Do not weld on any component. Welding may void the warranty and/or cause the product to fail. If any parts are missing, or for tech assistance; Contact King Off Road Racing Shocks: 714-530-8701 Most important after the install, Feel the difference and have fun.



2019+ Mercedes Sprinter 3500 2WD/4WD 2.5 Rear Shocks

King Shocks 12472 Edison Way Garden Grove, CA 92841
714-530-8701 www.kingshocks.com

6. Attach the factory brake line bracket to the new bracket using the factory bolt and nut. Make sure the tab is in the small hole to keep the bracket from rotating, tighten bolt to factory specs. Photos show left side, repeat steps on right side before installing shocks.



IMPORTANT: Read all instructions thoroughly from start to finish before beginning the install. Check parts list and make sure all parts are included in the kit. If the instructions are not properly followed severe frame, driveline and/or suspension damage may result. Check for frame and suspension damage prior to installation.

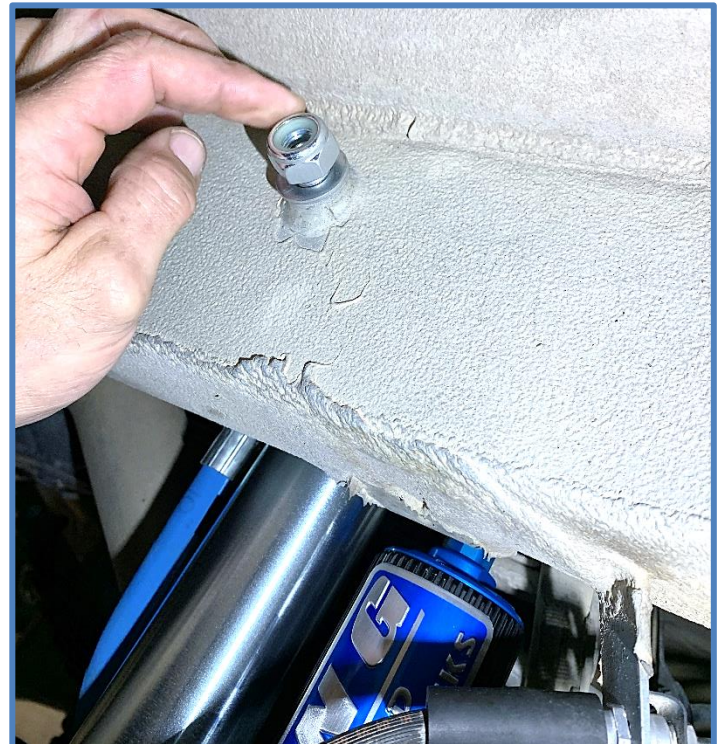
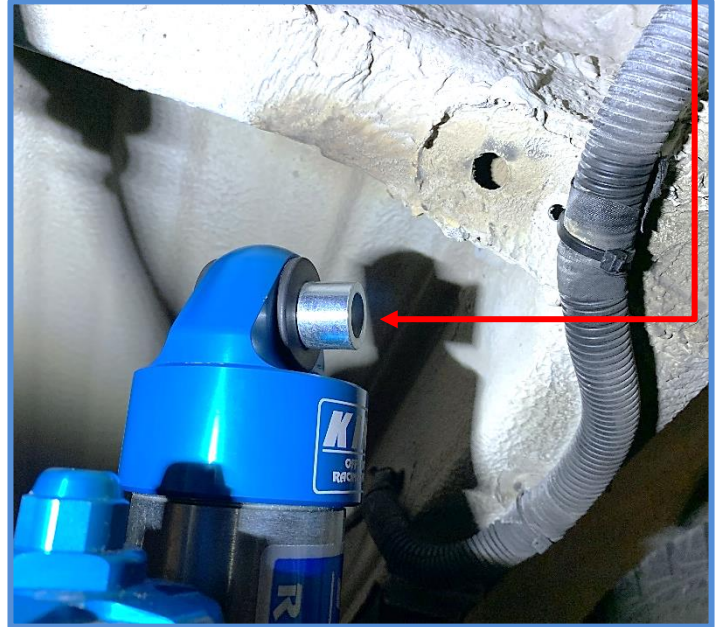
This kit does not require welding. Do not weld on any component. Welding may void the warranty and/or cause the product to fail. If any parts are missing, or for tech assistance; Contact King Off Road Racing Shocks: 714-530-8701 Most important after the install, Feel the difference and have fun.



2019+ Mercedes Sprinter 3500 2WD/4WD 2.5 Rear Shocks

King Shocks 12472 Edison Way Garden Grove, CA 92841
714-530-8701 www.kingshocks.com

7. Install King Shocks – Shocks are side specific and need to be oriented with the long-offset spacer towards the frame and reservoirs towards the front of the vehicle. See Photos. Place the shock on the upper mount with the longer bearing spacer towards the mount. Install the provided 170mm bolt with washer through the shock and shock mount. Install the provided washer and nut and tighten to 150 ft/lbs.



IMPORTANT: Read all instructions thoroughly from start to finish before beginning the install. Check parts list and make sure all parts are included in the kit. If the instructions are not properly followed severe frame, driveline and/or suspension damage may result. Check for frame and suspension damage prior to installation.

This kit does not require welding. Do not weld on any component. Welding may void the warranty and/or cause the product to fail. If any parts are missing, or for tech assistance; Contact King Off Road Racing Shocks: 714-530-8701 Most important after the install, Feel the difference and have fun.

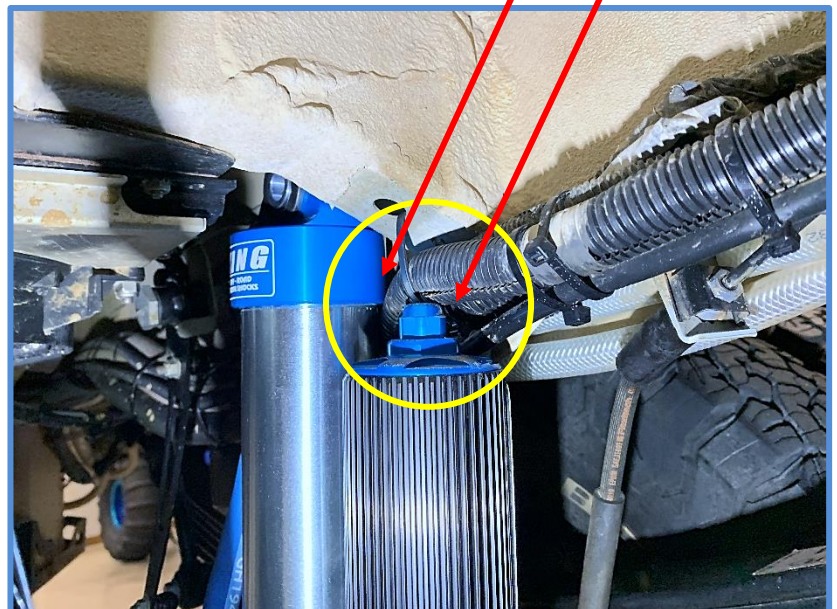
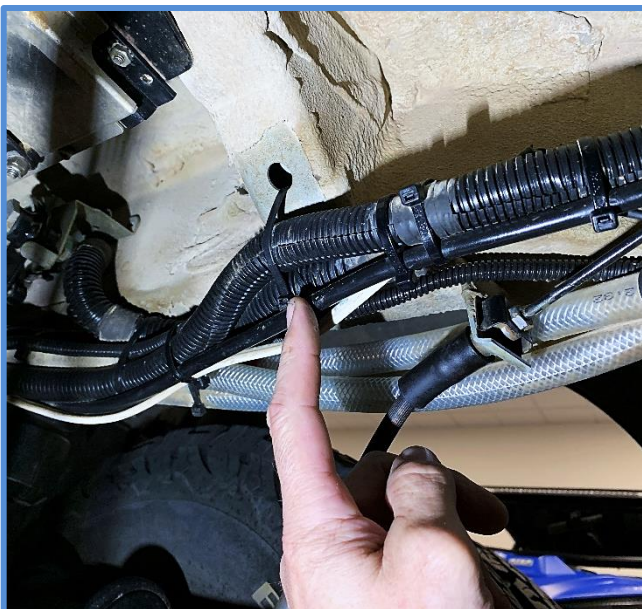


2019+ Mercedes Sprinter 3500 2WD/4WD 2.5 Rear Shocks

King Shocks 12472 Edison Way Garden Grove, CA 92841
714-530-8701 www.kingshocks.com



Some vehicles have a lot of wiring and plumbing running along the body. Make sure the shock/reservoir is not crushing anything or rubbing on any wiring or plumbing.



IMPORTANT: Read all instructions thoroughly from start to finish before beginning the install. Check parts list and make sure all parts are included in the kit. If the instructions are not properly followed severe frame, driveline and/or suspension damage may result. Check for frame and suspension damage prior to installation.

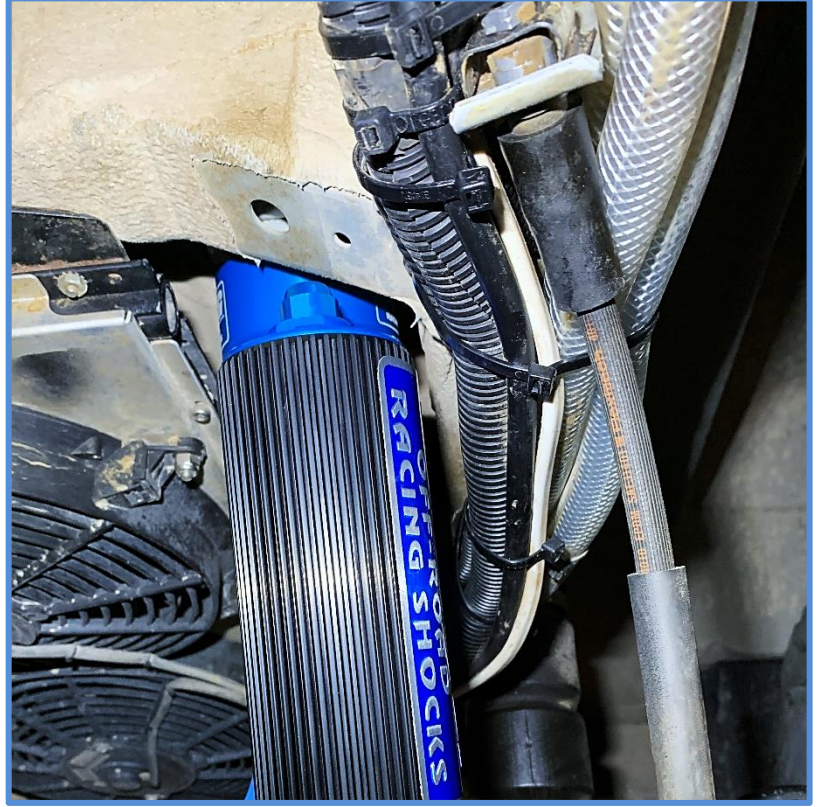
This kit does not require welding. Do not weld on any component. Welding may void the warranty and/or cause the product to fail. If any parts are missing, or for tech assistance; Contact King Off Road Racing Shocks: 714-530-8701 Most important after the install, Feel the difference and have fun.



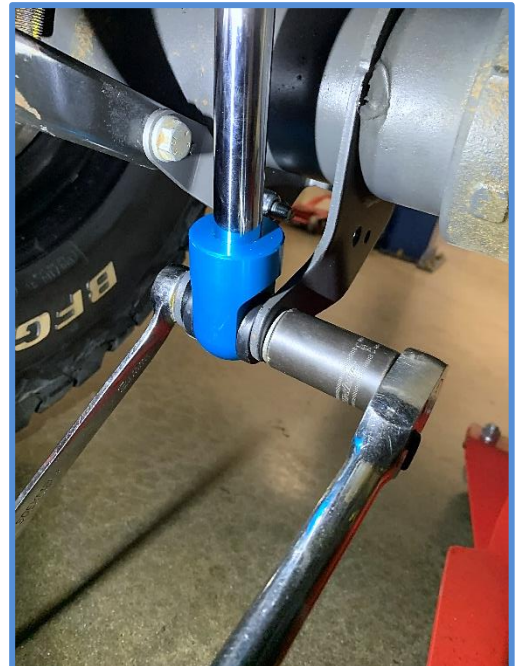
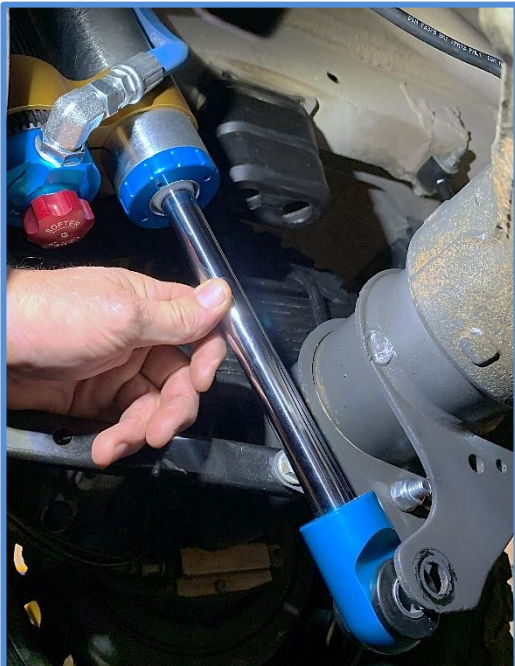
2019+ Mercedes Sprinter 3500 2WD/4WD 2.5 Rear Shocks

King Shocks 12472 Edison Way Garden Grove, CA 92841
714-530-8701 www.kingshocks.com

Reroute and clean up any wiring or plumbing that can encounter shock.



8. Place rod end in the lower mount, insert factory bolt, install nut, and tighten to factory specs.



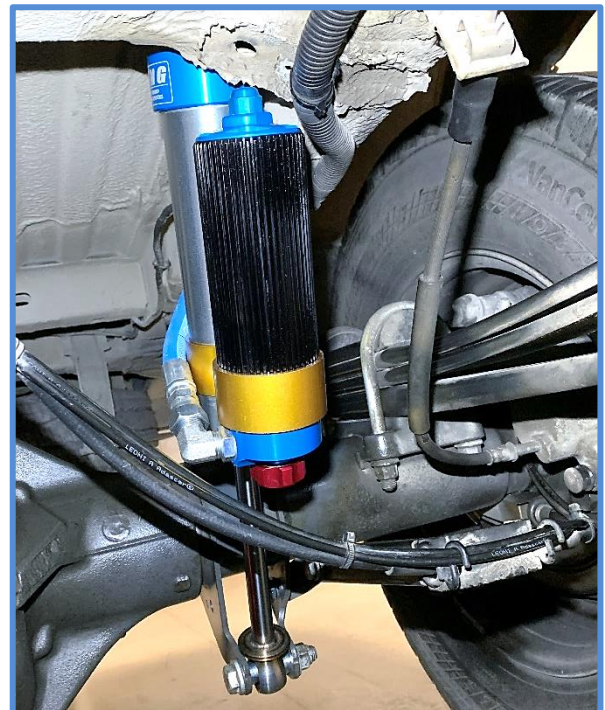
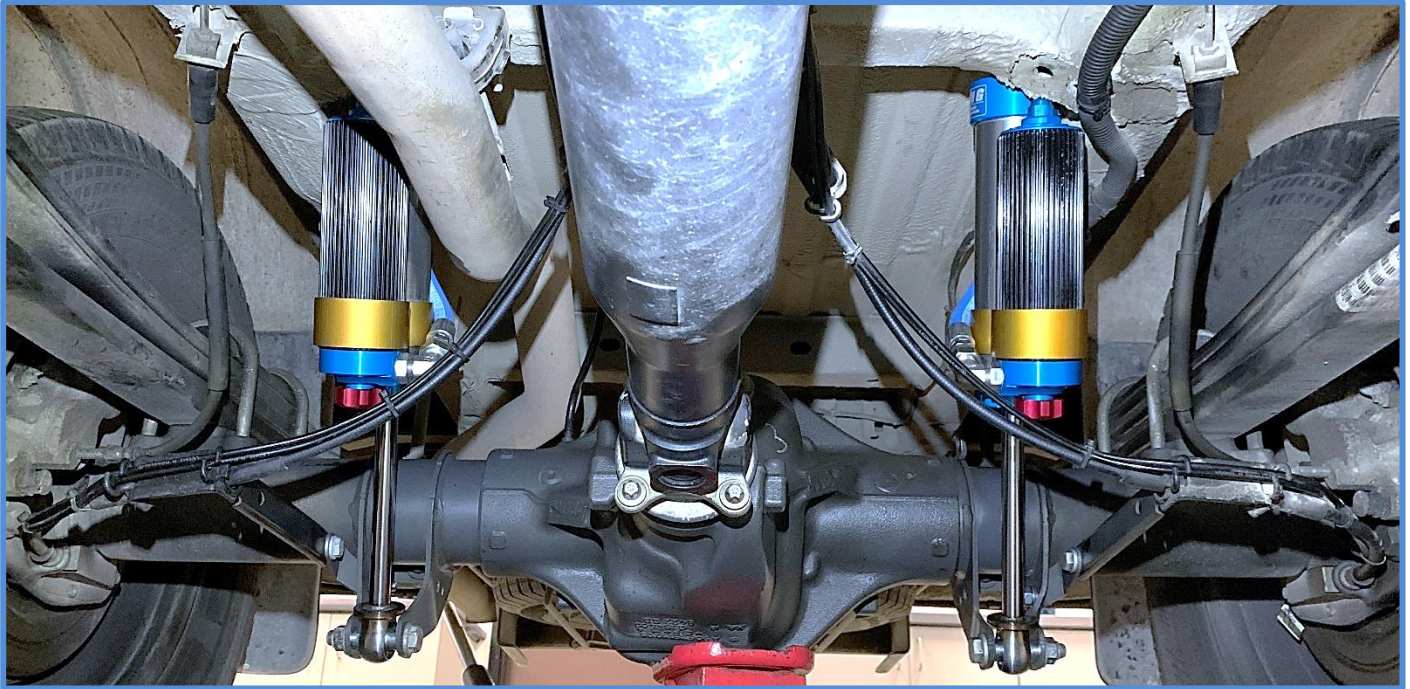
IMPORTANT: Read all instructions thoroughly from start to finish before beginning the install. Check parts list and make sure all parts are included in the kit. If the instructions are not properly followed severe frame, driveline and/or suspension damage may result. Check for frame and suspension damage prior to installation.

This kit does not require welding. Do not weld on any component. Welding may void the warranty and/or cause the product to fail. If any parts are missing, or for tech assistance; Contact King Off Road Racing Shocks: 714-530-8701 Most important after the install, Feel the difference and have fun.



2019+ Mercedes Sprinter 3500 2WD/4WD 2.5 Rear Shocks

King Shocks 12472 Edison Way Garden Grove, CA 92841
714-530-8701 www.kingshocks.com



DOUBLE CHECK ALL HARDWARE:

Make sure everything is installed correctly and all hardware is tight. Remove jack stands and lower vehicle to the ground. Recheck all hardware after 100 miles and periodically after that as part of routine maintenance.

IMPORTANT: Read all instructions thoroughly from start to finish before beginning the install. Check parts list and make sure all parts are included in the kit. If the instructions are not properly followed severe frame, driveline and/or suspension damage may result. Check for frame and suspension damage prior to installation.

This kit does not require welding. Do not weld on any component. Welding may void the warranty and/or cause the product to fail. If any parts are missing, or for tech assistance; Contact King Off Road Racing Shocks: 714-530-8701 Most important after the install, Feel the difference and have fun.